

Welcome to Rowan Ward County Hospital

Ward Routines

'Welcome to Your Ward' Leaflet

If you have not received this please ask a member of staff.

Ward Rounds

You will be visited by the Doctor daily. An appointment can be made for you and/or your family to speak with your Doctor, please ask your named nurse for details.

Nurse Rounds

Your nurse will check every 1-2 hours that you are comfortable and have everything you need.

Visitors:

Visiting times – (except for Protected Mealtimes)

Mon–Fri 18:30–20:00

Sat & Sun 14:00–16:00 & 18:30–20:00

Nurse Shifts

Day: 7:30am–8pm

Night: 7:30pm–8am

Food and Mealtimes

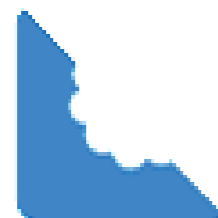
The Nurse in Charge will give you a menu to help you choose your meals, however sometimes your diet will be restricted due to medical reasons. If you need gluten free, low potassium, pureed, cultural or vegan meals please ask your ward hostess or nurse.

Further information on food allergens is available on request.



Breakfast

8am



Lunch

12 midday



Supper

6pm



Refreshments and snacks are available all day

About Your Care

During your stay we would like you to be fully involved with doctors, nurses and other staff in decisions about your care. Please ask if you don't understand any plans or decisions.

The Named Nurse is the allocated nurse responsible for your care during their shift. They will be the person who you or your relative can ask for immediate information and they will know about your circumstances and care.

You will also have a Responsible Consultant/Clinician who will look after you throughout your stay.

Infection Prevention

Help us to fight infection
"IT'S IN YOUR HANDS..."



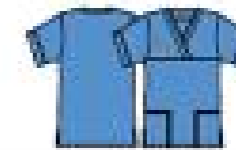
PLEASE CLEAN YOUR HANDS

Please wash your hands. You and your visitors can help us by always washing your hands with soap and water after using the toilet. Before you enter or leave a ward, please wash your hands and/or apply alcohol hand gel from a dispenser. Simply rub the gel onto dry hands and let it evaporate. Please feel free to ask your nurse or doctor if they have washed their hands.

Who's Who Uniforms



Sister/Ward Manager
(Navy blue)



Registered Nurse
(Hospital blue)



Clinical Nurse Specialist
(Royal blue)



Domestic staff
(Dark red)



Health care support staff
(Dark green)



Student
(Lilac)

Information on Patient services -

Pastoral/spiritual care
Sunflower volunteers
TV, phone and internet
Interpreters
Trolley service

Please tell us about your stay to help us improve our services and care. You will be asked to complete a Patient Feedback Survey at the end of your stay, you can also give feedback on our webpage at:
WWW.....

